

ContiClassic®

Artificial Urinary Sphincter

ContiClassic® Artificial Urinary Sphincter is used to treat urinary incontinence due to intrinsic sphincter deficiency in cases such as incontinence following prostate surgery.¹

Key Features & Benefits

ContiClassic® Artificial Urinary Sphincter is designed with years of experience in urology and with one thing in mind; an innovative device that offers safety and effectiveness for you and your patients.

♂ Diverse Occlusive Cuff Size Options for a Better Fit (3.75 cm - 4.25 cm - 4.75 cm)¹

ContiClassic® Artificial Urinary Sphincter is offered with a diverse size of occlusive cuffs for surgeon-made fit to the patient's urethral anatomy.

♂ HydroShield™ Coating¹

ContiClassic® Artificial Urinary Sphincter incorporates a hydrophilic coating on all external component surfaces. The hydrophilic coating offers you the freedom to choose the aqueous solution for dipping.

Hydrophilic coating facilitates the rapid and strong absorption of the solution on the device.

♂ EasyClick™ Connector & EasyClick™ Y-Connectors

EasyClick™ Connectors do not require an additional assembly tool. EasyClick™ Y-Connector enables double-cuff placement.

♂ Simultaneous use with Infla10® IPP

For Urinary Incontinence patients also suffering from Erectile Dysfunction, ContiClassic® AUS can be used in combination with the Infla10® Inflatable Penile Prosthesis models.²



Rigicon®
Innovative Urological Solutions

ContiClassic®

Artificial Urinary Sphincter

Product Code	ContiRegular® Occlusive Cuff (cm)
CTR-OC35	3.5
CTR-OC375	3.75
CTR-OC40	4.0
CTR-OC425	4.25
CTR-OC45	4.5
CTR-OC475	4.75
CTR-OC50	5.0
CTR-OC55	5.5
CTR-OC60	6.0
CTR-OC65	6.5
CTR-OC70	7.0
CTR-OC75	7.5
CTR-OC80	8.0
CTR-OC85	8.5
CTR-OC90	9.0
CTR-OC95	9.5
CTR-OC100	10.0
CTR-OC110	11.0
CTR-OC120	12.0
CTR-OC130	13.0

Product Code	ContiClassic® Pressure Regulating Balloon
CTC-PRB49	40 – 49 cm H ₂ O
CTC-PRB59	50 – 59 cm H ₂ O
CTC-PRB69	60 – 69 cm H ₂ O
CTC-PRB79	70 – 79 cm H ₂ O
CTC-PRB89	80 – 89 cm H ₂ O

Product Code	Control Pump
CTC-CP	ContiClassic® Control Pump

Product Code	Accessory Kit
CT-AK	Conti® Accessory Kit



EasyClick™ Connector



EasyClick™ Y-connector



References:

1. Rigicon® Conti® Artificial Urinary Sphincter Instructions for Use.
2. Boysen, William et al. "Combined Placement of Artificial Urinary Sphincter and Inflatable Penile Prosthesis Does Not Increase Risk of Perioperative Complications or Impact Long-term Device Survival." Urology vol. 124 (2019): 264-270.

Caution: Federal Law (U.S.) restricts this device to sale by or on the order of a physician.

Prior to use, please review the Instructions for Use for a complete listing of indications, contraindications, warnings, precautions and potential adverse events.

Indications for Use: Conti Artificial Urinary Sphincter Systems are used to treat urinary incontinence due to intrinsic sphincter deficiency in cases such as incontinence following prostate surgery.

Warnings: Patients with urinary tract infections, diabetes, spinal cord injuries, open sores or regional skin infections may have increased risk of infection associated with a prosthesis. Erosion may be caused by infection, pressure on the tissue, improper cuff sizing, improper balloon selection, tissue damage, and component misplacement. Patients with urge incontinence, overflow incontinence, detrusor hyperreflexia or bladder instability should have these conditions treated and controlled (or resolved) prior to implantation of the device. Surgical, physical, psychological, or mechanical complications, if they occur, may necessitate revision or removal of the prosthesis.

Potential Adverse Events: May include device malfunction/failure leading to additional surgery, device/tissue erosion through urethra/bladder/scrotum, urinary retention, infection, and pain/soreness.

Infla10[®] X three-piece inflatable penile prosthesis

Product Overview

Rigicon[®] offers the Infla10[®] X Inflatable Penile Prosthesis (IPP) for men that need surgical intervention for the management of Erectile Dysfunction. Infla10[®] X is indicated for patients suffering from chronic, organic erectile dysfunction (impotence) and are candidates for a penile prosthesis implantation.¹

Infla10[®] X IPP is designed for you and your patients and offers innovative features¹:

- ♂ **HydroShield™ Coating**
- ♂ **Rapid-Pump™**
- ♂ **AdaptiveReservoir™**
- ♂ **Easy-Click™ Connectors**
- ♂ **ConnectSecure™ Extenders**
- ♂ **NarrowBody™ Cylinders**



Key Features & Benefits

Infla10® X is designed with years of experience in urology and with one thing in mind; an innovative device that offers safety and effectiveness for you and your patients.

HydroShield™ Coating

Infla10® X incorporates a hydrophilic coating on all external component surfaces. The hydrophilic coating offers you the freedom to choose the aqueous solution. Hydrophilic coating facilitates the rapid and strong absorption of the solution on the device and may promote easier device implantation.

Rapid-Pump™

Our innovative pump mechanism offers greater ease and speed for your patients when inflating and deflating the prosthesis.

AdaptiveReservoir™

The reservoir will easily take the shape of the implantation site offering post-op comfort for your patients.

Easy-Click™ Connectors

All tubing connects easily without any additional assembly tools. Simply click to secure connections.

ConnectSecure™ Rear Tip Extenders (RTE)

ConnectSecure™ RTE provides a secure and rigid connection.

NarrowBody™ Cylinders

Infla10® X offers a portfolio of different dimensions to meet every patient's anatomical need.

Infla10® X Infrapubic Approach	
Prosthesis Product Code	Prosthesis Lengths
INF1012-IP	12 cm
INF1015-IP	15 cm
INF1018-IP	18 cm
INF1022-IP	22 cm
INF1024-IP	24 cm

Infla10® X Penoscrotal Approach	
Prosthesis Product Code	Prosthesis Lengths
INF1012-PS	12 cm
INF1015-PS	15 cm
INF1018-PS	18 cm
INF1022-PS	22 cm
INF1024-PS	24 cm

Infla10® NarrowBody™ Infrapubic Approach	
Prosthesis Product Code	Prosthesis Lengths
INF1010-NB-IP	10 cm
INF1012-NB-IP	12 cm
INF1014-NB-IP	14 cm
INF1016-NB-IP	16 cm

Infla10® NarrowBody™ Penoscrotal Approach	
Prosthesis Product Code	Prosthesis Lengths
INF1010-NB-PS	10 cm
INF1012-NB-PS	12 cm
INF1014-NB-PS	14 cm
INF1016-NB-PS	16 cm

Infla10® AdaptiveReservoir™	
Reservoir Product Code	Volume
INF10RS-65	65 ml
INF10RS-70	70 ml
INF10RS-110	110 ml

Infla10® ConnectSecure™ Rear Tip Extenders	
0.5 cm / 1 cm / 1.5 cm / 2 cm / 3 cm / 4 cm / 5 cm / 6 cm	



Infla10® X
AdaptiveReservoir™ 70ml-110ml



Infla10® X
AdaptiveReservoir™ 65ml

Caution: Federal Law (U.S.) restricts this device to sale by or on the order of a physician.

Prior to use, please review the Instructions for Use for a complete listing of indications, contraindications, warnings, precautions and potential adverse events.

References: 1 Rigicon® Infla10® three-piece penile prosthesis Instructions for Use.

Rigicon, INC.

2805 Veterans Highway Suite 13, Ronkonkoma,

NY 11779 United States of America

+1 (888) 202-9790 - www.rigicon.com

Rigicon®
Innovative Urological Solutions

INF10X-09-05.2020

Rigi10™ hydrophilic malleable penile prosthesis

Product Overview

For the Physicians

♂ Easy to implant

High bending angle may allow implantation with a smaller incision. The increased lubricity with hydrophilic coating may promote easier surgical placement.

♂ Easy to size

Available in six diameters to better meet the patient's anatomical needs.

♂ Easy to assemble

SecureFit™ Extenders connect easily to add length. All diameters come with two each of the extender sizes (0.5 cm and 1.0 cm).

♂ Easy to prevent from infection

The hydrophilic coating offers physicians the freedom to choose their preferred aqueous solution.

For the Patients

♂ Rigid shaft and distal end for a strong erection.

♂ High bending angle and memory for easy and comfortable concealment.

♂ Durable. Rigi10™ hydrophilic malleable penile prosthesis continues to offer satisfactory performance results even after long cycles of simulated tests.¹



Flexible Rod Technology™

Flexible Rod Technology™ provides easy bending and avoids undesirable turning on the axis of the implant when an erection is desired by the patient.

Flexible Rod Technology™ enables the rod to reach a bending angle of more than 135 degrees while simulating a more natural erection feeling.

SecureFit™ Extenders

Each Rigi10™ hydrophilic malleable penile prosthesis comes with a set of SecureFit™ Extenders, available in 0.5 cm and the 1.0 cm sizes.

SecureFit™ Extenders are easily attached to the Flexible Rod. The firm connection provides the physician with confidence in a secure connection between the extenders and the Flexible Rod.



Hydrophilic Coating

Rigi10™ hydrophilic malleable penile prosthesis incorporates a hydrophilic coating on all external component surfaces. The hydrophilic coating offers you the freedom to choose the aqueous solution. Hydrophilic coating facilitates the rapid and strong absorption of the solution on the device and may promote easier device implantation.

Offers 6 different diameters

Diverse diameter options with Rigi10™ ensure best fit for the anatomical needs of each patient. Rigi10™ 9 mm and 10 mm rods are designed with conical distal tips to facilitate implantation in patients with narrower or compromised corpora cavernosa.



Ordering Information

Prosthesis Product	Prosthesis Diameters	Prosthesis Lengths	Extenders
RG1009H	9 mm	23 cm	0.5 cm and 1 cm
RG1010H	10 mm	23 cm	
RG1011H	11 mm	25 cm	
RG1012H	12 mm	25 cm	
RG1013H	13 mm	25 cm	
RG1014H	14 mm	25 cm	

Caution: Federal Law (U.S.) restricts this device to sale by or on the order of a physician.

Prior to use, please review the Instructions for Use for a complete listing of indications, contraindications, warnings, precautions and potential adverse events.

References: 1 Data on file RIGI10H-DOF-01-01.2019

Rigicon, INC.

2805 Veterans Highway Suite 13, Ronkonkoma,
NY 11779 United States of America

+1 (888) 202-9790 - www.rigicon.com

Rigicon®
Innovative Urological Solutions

RIGI10H-06-03-2020

Testi10[™] testicular prosthesis

Product Overview

**Treatment: Monorchism, Anorchism, Cryptorchidism,
Orchiectomy and other conditions or procedures.**

Rigicon[®] offers two different types of testicular prosthesis.
Testi10[™] Firm model and Testi10[™] Saline-Filled model.

Testi10[™] Testicular Prosthesis:

- ♂ More natural feeling designs
- ♂ Aims for higher patient satisfaction
- ♂ Available in five sizes to better meet the patient's anatomical needs

Testi10[™] is designed with high quality silicone. The prosthesis is shaped and designed with a soft texture to offer patients missing one or both testicles a more natural like feeling.



Saline Filled
Testicular Prosthesis



Firm Testicular Prosthesis

Dimensional Specifications & Ordering Information



Testi10™ Testicular Prosthesis

Testi10™ Saline-filled Testicular Prosthesis		
Prosthesis Product	Dimension A	Dimension B
TESTISF-XS	2.7 cm	2.1 cm
TESTISF-S	3.2 cm	2.6 cm
TESTISF-M	4.1 cm	2.9 cm
TESTISF-L	4.7 cm	3.2 cm
TESTISF-XL	5.1 cm	3.2 cm

Testi10™ Firm Testicular Prosthesis		
Prosthesis Product	Dimension A	Dimension B
TESTIF-XS	2.7 cm	2.1 cm
TESTIF-S	3.2 cm	2.6 cm
TESTIF-M	4.1 cm	2.9 cm
TESTIF-L	4.7 cm	3.2 cm
TESTIF-XL	5.1 cm	3.2 cm

Caution: Federal Law (U.S.) restricts this device to sale by or on the order of a physician.

Prior to use, please review the Instructions for Use for a complete listing of indications, contraindications, warnings, precautions and potential adverse events.

Rigicon, INC.
2805 Veterans Highway Suite 13, Ronkonkoma,
NY 11779 United States of America
+1 (888) 202-9790 - www.rigicon.com

Rigicon®
Innovative Urological Solutions

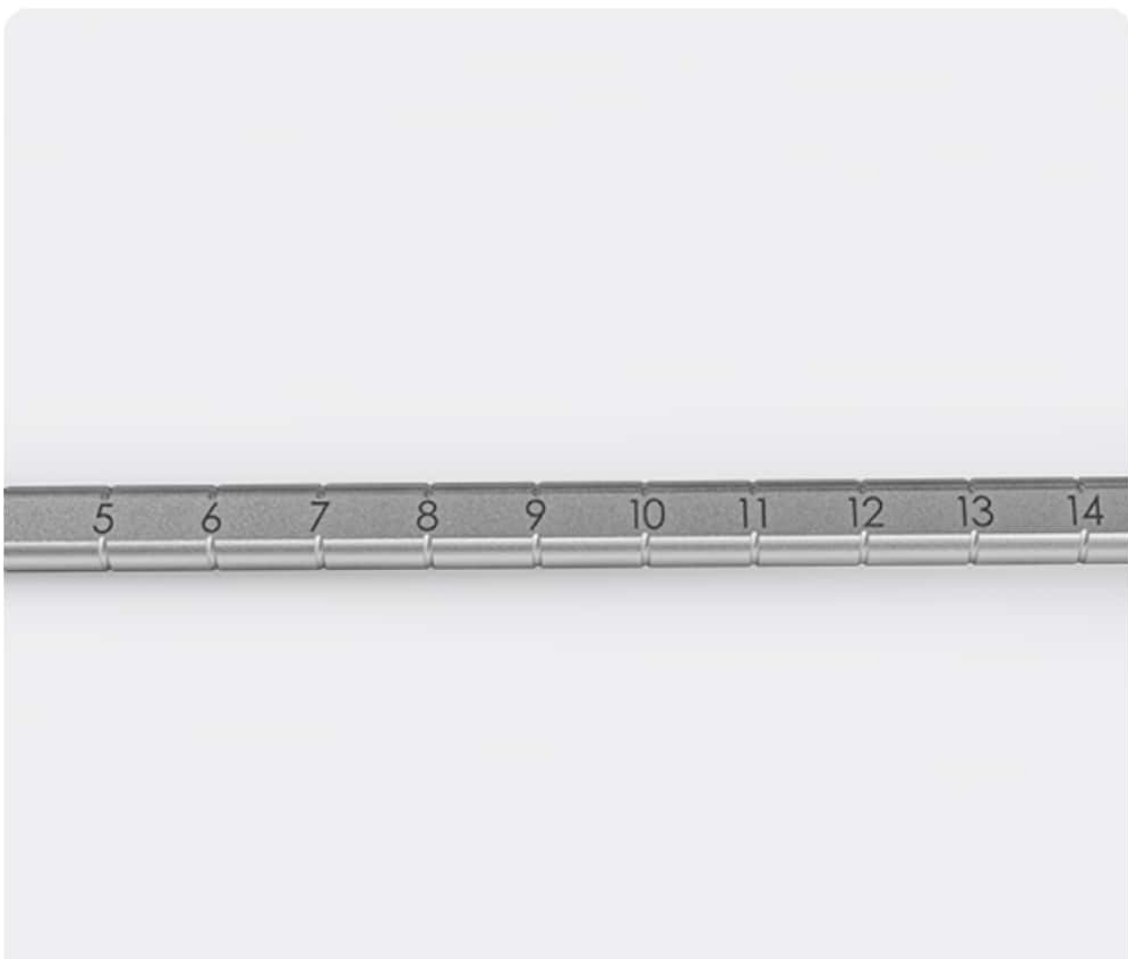
TEST110-04-03-2020

Rigicon Furlow Insertion Tool™

Novel insertion tool from
Rigicon



> Furlow Insertion Tool is an essential tool for any Inflatable Penile Prosthesis implantation. Rigicon offers a re-usable model for use with Infla10[®] IPP surgeries.



Robust Re-usable Material

Manufactured from high-quality materials for repeated reprocessing and resterilization cycles. See Rigicon Instructions on Reprocessing and Resterilization of Reusable Surgical Tools.

Rigicon Surgical Retractor

Convenience of single-use



> Rigicon surgical retractor is designed with insights and feedback from high-volume implanters all around the globe. The retractor offers the convenience of using single-use surgical tools in the Operating Room.

Rigicon Surgical Retractor At A Glance



A shape available for every need

Manufactured in 3 different shapes:

- 8-shaped retractor
- Snowman shaped retractor
- Rectangular retractor